

**NPY1R Antibody (monoclonal) (M03)****Mouse monoclonal antibody raised against a partial recombinant NPY1R.****Catalog # AT3088a****Specification**

---

**NPY1R Antibody (monoclonal) (M03) - Product Information**

Application	WB, E
Primary Accession	<a href="#">P25929</a>
Other Accession	<a href="#">BC036657</a>
Reactivity	Human
Host	mouse
Clonality	Monoclonal
Isotype	IgG2a Kappa
Calculated MW	44392

**NPY1R Antibody (monoclonal) (M03) - Additional Information****Gene ID** 4886**Other Names**

Neuropeptide Y receptor type 1, NPY1-R, NPY1R, NPYR, NPY1

**Target/Specificity**

NPY1R (AAH36657, 1 a.a. ~ 115 a.a) partial recombinant protein with GST tag. MW of the GST tag alone is 26 KDa.

**Dilution**

WB~~1:500~1000

E~~N/A

**Format**

Clear, colorless solution in phosphate buffered saline, pH 7.2 .

**Storage**

Store at -20°C or lower. Aliquot to avoid repeated freezing and thawing.

**Precautions**

NPY1R Antibody (monoclonal) (M03) is for research use only and not for use in diagnostic or therapeutic procedures.

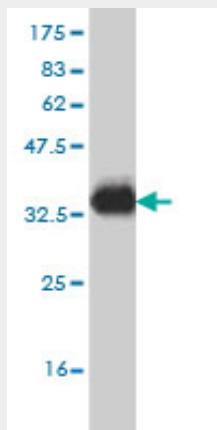
**NPY1R Antibody (monoclonal) (M03) - Protocols**

Provided below are standard protocols that you may find useful for product applications.

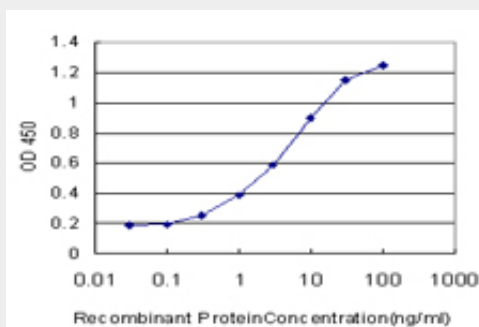
- [Western Blot](#)
- [Blocking Peptides](#)
- [Dot Blot](#)

- [Immunohistochemistry](#)
- [Immunofluorescence](#)
- [Immunoprecipitation](#)
- [Flow Cytometry](#)
- [Cell Culture](#)

### NPY1R Antibody (monoclonal) (M03) - Images



Antibody Reactive Against Recombinant Protein. Western Blot detection against Immunogen (38.39 kDa) .



Detection limit for recombinant GST tagged NPY1R is approximately 0.1 ng/ml as a capture antibody.

### NPY1R Antibody (monoclonal) (M03) - Background

Neuropeptide Y (NPY; MIM 162640) is one of the most abundant neuropeptides in the mammalian nervous system and exhibits a diverse range of important physiologic activities, including effects on psychomotor activity, food intake, regulation of central endocrine secretion, and potent vasoactive effects on the cardiovascular system. Two major subtypes of NPY (Y1 and Y2) have been defined by pharmacologic criteria. NPY receptors, such as NPY1R, have been identified in a variety of tissues, including brain, spleen, small intestine, kidney, testis, placenta, and aortic smooth muscle (Herzog et al., 1992 [PubMed 1321422]).

### NPY1R Antibody (monoclonal) (M03) - References

1. Neuropeptide Y and Neuropeptide Y Y5 Receptor Interaction Restores Impaired Growth Potential of Aging Bone Marrow Stromal Cells. Igura K, Haider HK, Ahmed RP, Sheriff S, Ashraf M. Rejuvenation Res. 2011 May 19. [Epub ahead of print]